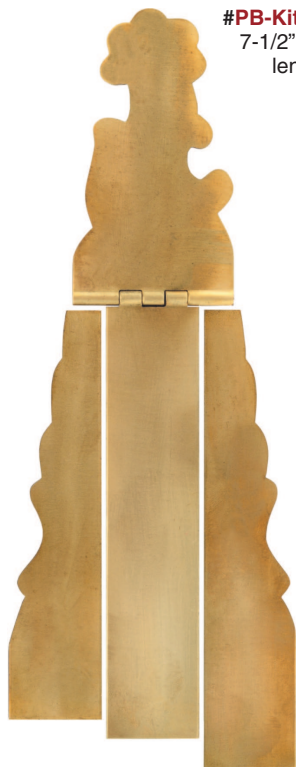




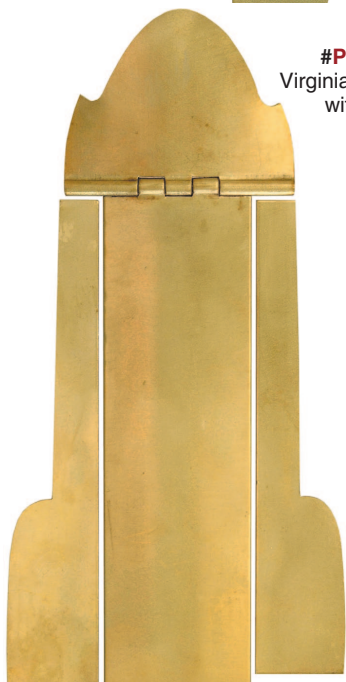
**#PB-Kit-6**  
7-1/2" overall  
length



**#PB-Kit-Dickert**  
7-1/2" overall  
length



**#PB-Kit-41**  
7-1/2" overall  
length



**#PB-Kit-44**  
Virginia patchbox kit  
with flat lid



**#PB-Kit-44-D**  
Virginia patchbox kit  
with domed lid



**#PB-Kit-12**  
7-1/4" overall  
length

**York County Patchbox.....#PB-Kit-6-B, I, or S**  
Shown in *Gunsmiths of Lancaster County, Pennsylvania*, by Dr. James Whisker, attributed to Isaac Berlin. With spring, spring mounting screw, instructions, and suggested engraving patterns.

<b>#PB-Kit-6-B</b>	patchbox kit, brass	<b>only \$25.99</b>
<b>#PB-Kit-6-I</b>	patchbox kit, iron	<b>only \$25.99</b>
<b>#PB-Kit-6-S</b>	patchbox kit, nickel silver	<b>only \$30.99</b>

**Lancaster County Patchbox .....#PB-Kit-6-B or I**

Shown in *Gunsmiths of Lancaster County, Pennsylvania*, by Dr. James Whisker, attributed to H. Lechler. With spring, screw, and instructions.

<b>#PB-Kit-Dickert-B</b>	patchbox kit, brass	<b>only \$23.99</b>
<b>#PB-Kit-Dickert-I</b>	patchbox kit, iron	<b>only \$23.99</b>

**Emmitsburg, Maryland Patchbox ..... #PB-Kit-41-B, or S**

John Armstrong, Emmitsburg, Maryland pattern. This patchbox kit includes spring, screw, instructions, and suggested engraving patterns.

<b>#PB-Kit-41-B</b>	patchbox kit, brass	<b>only \$27.99</b>
<b>#PB-Kit-41-S</b>	patchbox kit, nickel silver	<b>only \$33.99</b>

**Patchbox kit, for Virginia rifle, plain or domed lid:**

This Virginia longrifle patchbox design is a favorite of the famous contemporary gun maker Herschel House. Flat or domed lid.

Curved to fit your stock, neatly hinged, with a steel cam finger inside the lid, this patchbox kit includes a cam spring and mounting screw, for cam-over-center closure. Polished outside, this patchbox is made of .052" thick brass or iron. Overall length is 7 inches.

<b>#PB-Kit-44-B</b>	patchbox kit, Virginia, brass	<b>only \$23.99</b>
<b>#PB-Kit-44-I</b>	patchbox kit, Virginia, iron	<b>only \$33.99</b>
<b>#PB-Kit-44-D-B</b>	patchbox kit, domed lid, brass	<b>only \$33.99</b>
<b>#PB-Kit-44-D-I</b>	patchbox kit, domed lid, iron	<b>only \$23.99</b>

**Tennessee Patchbox .....#PB-Kit-12-B or I**

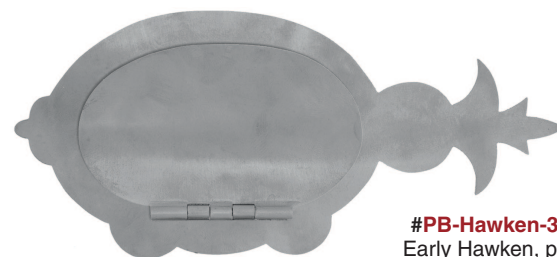
Shown in *The Kentucky Rifle*. Typically found only in iron. Copied from a rifle made by J.G. Gross, Sullivan County, Tennessee. We also have the matching buttplate and triggerguard. Spring and instructions are included. Mount the head using two unplated steel wood screws.

<b>#PB-Kit-12-I</b>	patchbox kit, iron	<b>only \$11.99</b>
<b>#PB-Kit-12-B</b>	patchbox kit, brass	<b>only \$11.99</b>

**Patchbox kit, for Hawken rifle.....#PB-Hawken-3-B, I, or S**

The "Pineapple finial" early Hawken patchbox kit is not difficult to install. The lid is inlet first, with side hinge rotated straight down, mounted to the inside wall of the cavity. Curved to fit your stock, our kit is polished .052" thick brass, iron, or nickel silver. Use our unplated steel #6 x 1/2" wood screws. Overall length is 6-1/4 inches. An over-center cam, spring, and mounting screw are included.

<b>#PB-Hawken-3-B</b>	patchbox kit, brass	<b>only \$27.99</b>
<b>#PB-Hawken-3-I</b>	patchbox kit, iron	<b>only \$27.99</b>
<b>#PB-Hawken-3-S</b>	patchbox kit, nickel silver	<b>only \$34.99</b>



**#PB-Hawken-3-B, I, or S**  
Early Hawken, patchbox kit