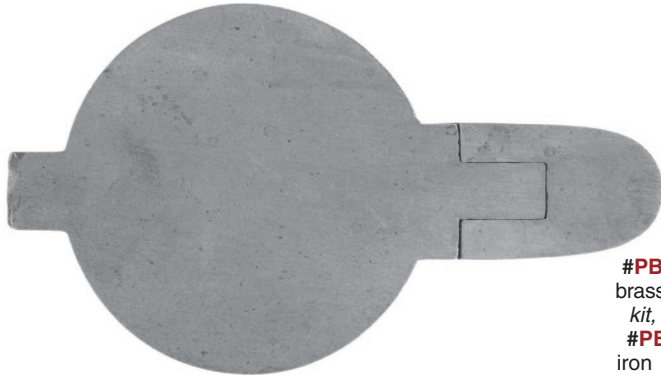


Capbox Kits

© 2012, Track of the Wolf, Inc.
actual size
 Made in the U.S.A.

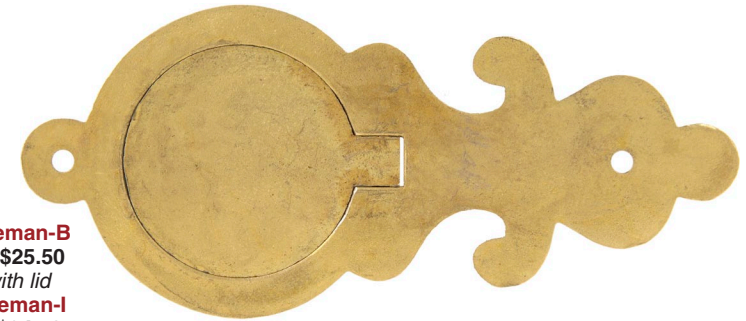


#PB-Eng-B
 brass \$26.99
kit, with lid
#PB-Eng-I
 iron \$19.99

English Capbox kit, round, wax cast.....**#PB-Eng-B or I**

From a Gentleman's Sporting Rifle, the original engraving is visible on the lid. Spring and screws are sold separately.

#PB-Eng-B capbox kit, with lid, wax cast brass **only \$26.99**
#PB-Eng-I capbox kit, with lid, wax cast steel **only \$19.99**



#PB-Leman-B
 brass \$25.50
kit, with lid
#PB-Leman-I
 iron \$24.50

H. E. Leman "Wilted Lilly" Capbox kit. #PB-Leman-B or I) Used on Leman Plains and Indian Trade rifles. Wax cast lid has pin ends. Requires minor fitting and a flat spring. Use #8 x 1/2" screws.

#PB-Leman-B capbox, wax cast brass **only \$25.50**
#PB-Leman-I capbox, wax cast steel **only \$24.50**

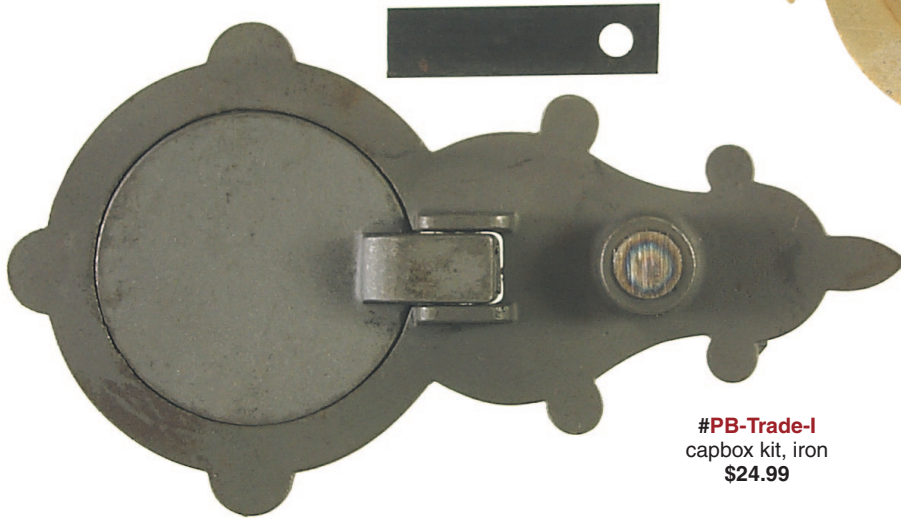


#PB-Hawk-1-B
 brass \$27.99
lid included
#PB-Hawk-1-I
 iron \$22.99

Hawken Rifle Capbox kit, wax cast.....**#PB-Hawk-1-B or I**

Round lid requires minor fitting. Our inletting black makes "contact transfer stain inletting" easy! Use a small frizzen screw as a pivot pin. A flat spring, two #6-5/8" screws, and a pin are required.

#PB-Hawk-1-B capbox kit with lid, brass **only \$27.99**
#PB-Hawk-1-I capbox kit with lid, iron **only \$22.99**



#PB-Trade-I
 capbox kit, iron
\$24.99

Plains Rifle capbox kit, iron.....**#PB-Trade-I**

Suitable for a fullstock or early halfstock Hawken rifle, this capbox is appropriate for a Plains rifle in the style of Dimick or other Saint Louis maker, or Wurflein, Tryon, Leman, Henry, or other Pennsylvania maker. Or install it on an iron trimmed Ohio rifle. Spring, pin and screws sold separately.

Shown inside out, the lid fits pretty well, as cast. Minor file fitting will produce a near perfect fit of the lid to the bezel. The front surface is spotted for six unplated #6 x 1/2" wood screws.

#PB-Trade-I capbox kit, wax cast steel **only \$24.99**
#Pin-3-32 dowel pin, 3/32", tempered steel **only \$.50**
#Screw-6x1/2 wood screw, #6 x 1/2" slotted **only \$.20**



#PB-Spring-L
 long spring, .032" tempered steel
sold separately
only \$1.60



#PB-Plains-B
 capbox kit, brass,
 with lid
only \$32.99

Plains Rifle Capbox, wax cast.....**#PB-Plains-B, I, or S**

Wax cast in your choice of brass, steel, or nickel silver. The lid requires minor fitting. Order a flat spring and mounting screw, and two iron wood screws. Fitting, and finishing will make a nice capbox.

#PB-Plains-B capbox, wax cast brass **only \$32.99**
#PB-Plains-I capbox, wax cast steel **only \$29.99**
#PB-Plains-S capbox, wax cast nickel **only \$39.99**