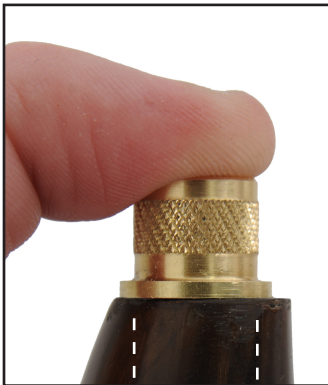
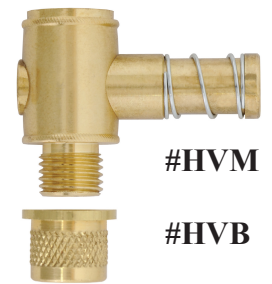


Track of the Wolf, Inc.

Instructions for installing a powder measure valve and plug.



Step 1.

Step 1. Check to see if the tip is wide enough to accommodate the 15/32" diameter bushing. If not, cut the tip down to an area of sufficient width.

Step 2. File the tip flat so there are no gaps between the bushing collar and the horn.

Step 3. Using a 15/32" drill bit, enlarge the hole to fit the bushing. Be sure to secure the horn firmly in place, as the round horn can easily lose grip.



Step 2.

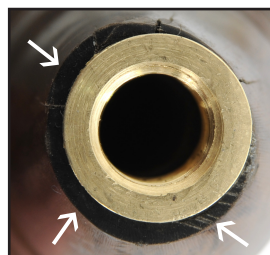


Step 3.

Step 4. Place the bushing and valve in the hole and check for fit. Rotate the bushing so the valve button is in a position you can comfortably reach with your thumb.



Step 5. Remove the valve. Glue the bushing in place with a strong glue or epoxy. Once dry, file the horn flush with the bushing collar being careful not to cut into the collar.



Step 5.

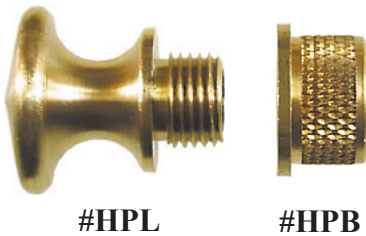


Step 6. Sand the tip with a fine sandpaper for final finish. A furniture scraper or knife blade can also be used to scrape it smooth. **Note:** #Horn-D has an antique finish which will be removed when filed or sanded (see top horn photo). To make the neck more uniform in color, sand away the finish from the mouth to the base of the neck with a light sand paper and rub it with ebony toner (see bottom horn photo) or other wood stain if needed.

The #HVM valve is threaded to accept a number of pouring tips and powder measures.



#SP-020
(15, 20, 25, 30, 35, 40, 50, 60,
75, 90, 100 & 110 grains available)



Step 7. You can either leave the turned wood knob on the horn or remove it and add a turned brass knob #HPL with base #HPB. First, cut away the wood knob with a saw close to the base.



Step 7 - 8.

Step 8. File the base of the plug flat, being careful not to cut into the rest of the surrounding wood. Lay the bushing collar against the base of the plug to check that they are flush.

Step 9. Using a 5/8" drill bit, drill a hole completely through the plug.

Step 10. Use a strong glue or epoxy to seat the bushing permanently in the hole. Wipe away any glue that gets on the wood plug.

Note: If the wood plug is nicked or damaged during the above process it may need to be sanded and re-finished.

